

THE
Haven™

NOT YOUR TYPICAL GARAGE



THE Haven

A New Evolution of Luxury Garage Condos, Prioritizing Privacy and Security.

Crafted for car enthusiasts, art curators, or diverse collectors - the HAVEN is a space to share with family and friends.



CONCEPTUAL RENDERING



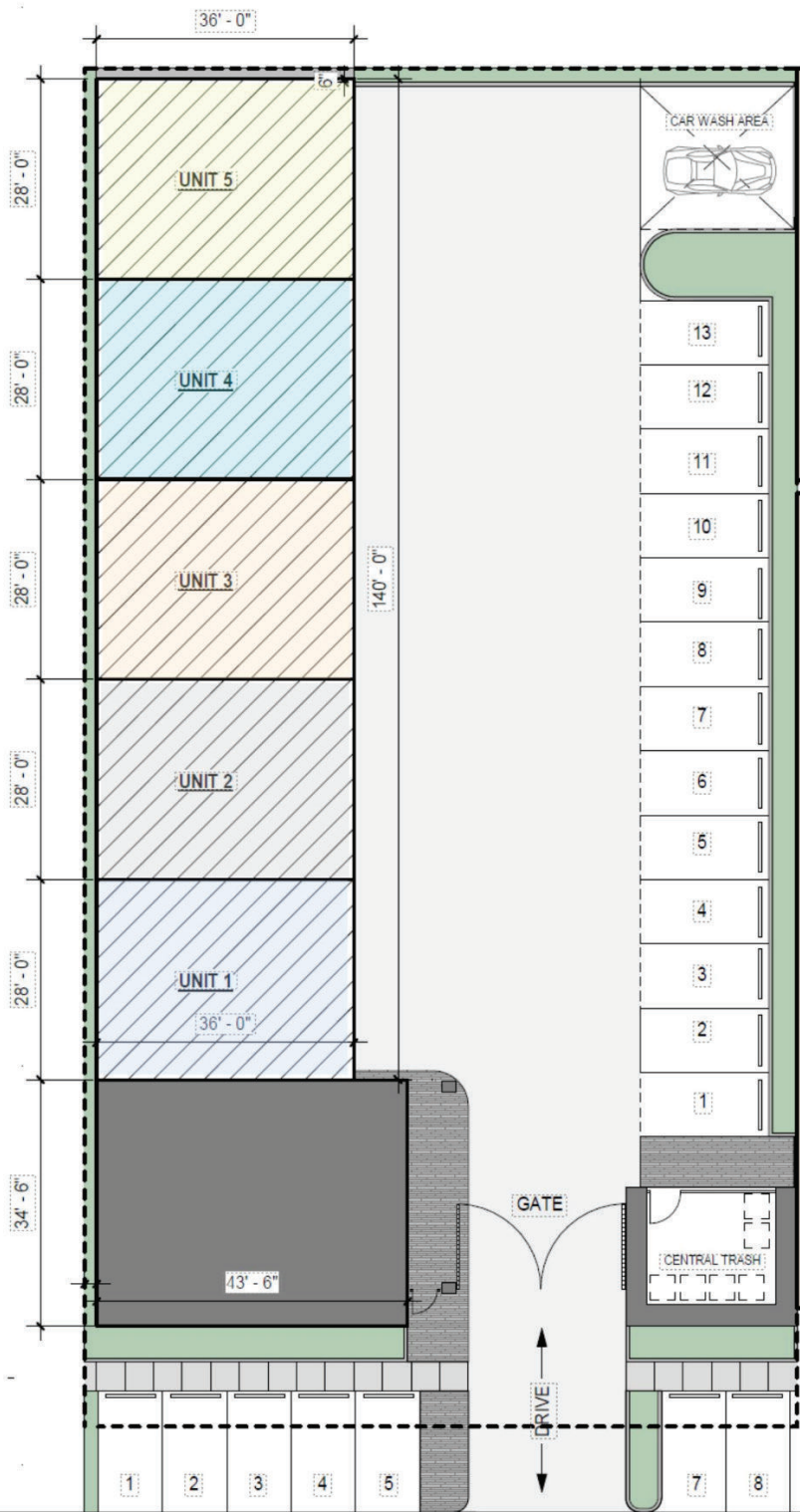
CONCEPTUAL RENDERING



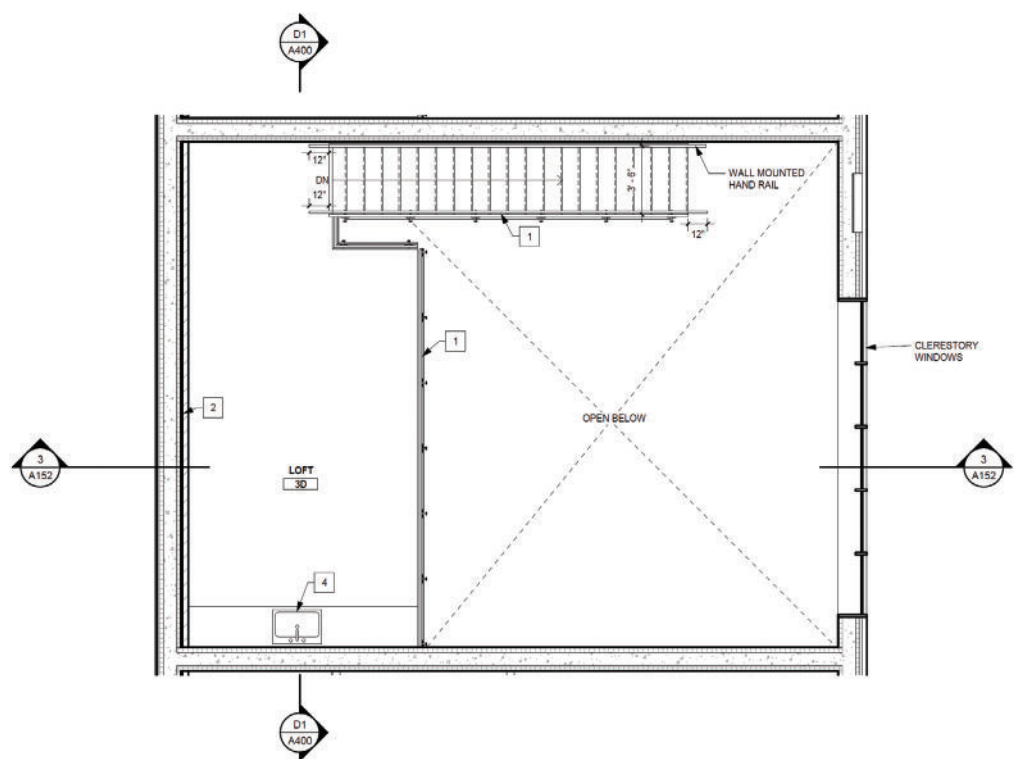
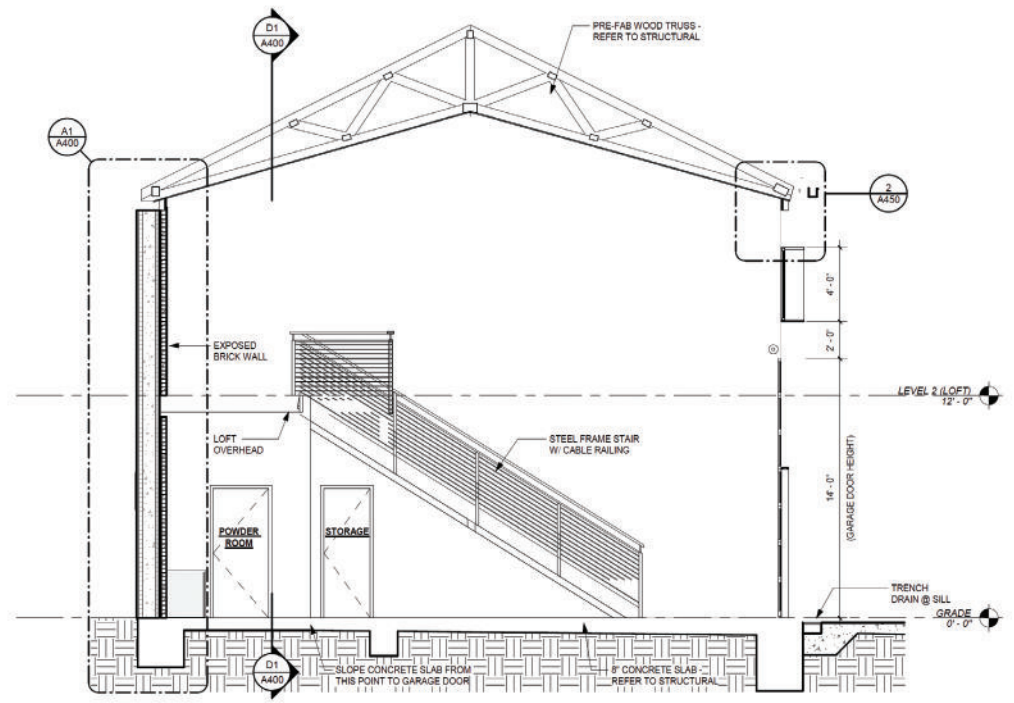
Each of the Five Exclusive Units Feature:



- Separately metered climate-controlled HVAC with remote controlled Smart Wi-Fi Thermostats
- 21-foot high ceilings / 16-foot industrial garage doors
- 300SF Mezzanine loft with wet bar and entertaining space
- Custom LED lighting with dimmer capability
- Epoxy/resin garage floors
- 220V outlets car side
- Gated property access
- Fully insulated, 6-inch-thick Custom Masonry Unit walls for privacy of sound and space
- Glass front windows allow for natural light while maintaining privacy
- Finished bathroom



Delaware Avenue



SCHEMATIC DRAWINGS



EXTERIOR RENDERINGS



PROJECT STATISTICS:

5 Units

UNIT SQUARE FOOTAGE: 1280SF
980SF-BASE FLOOR | 300SF-MEZZANINE

PARKING:

2 exterior spaces per rented unit are assigned to the tenant. Additional parking can be made available for events as needed.



IF YOU KNOW, YOU KNOW...

1535 DELAWARE AVENUE

This location is quietly hidden away from the general public and is both gated and secured with cameras around the property.

- 3 minutes from Richmond Road
- 8 minutes from City Center
- 9 minutes from I-75 / Hamburg

Leasing Inquiries:

MEGAN WALSEN
megan@reddrawdev.com
859.379.6990

SPACES ARE HIGHLY LIMITED!

THE

Flawless™